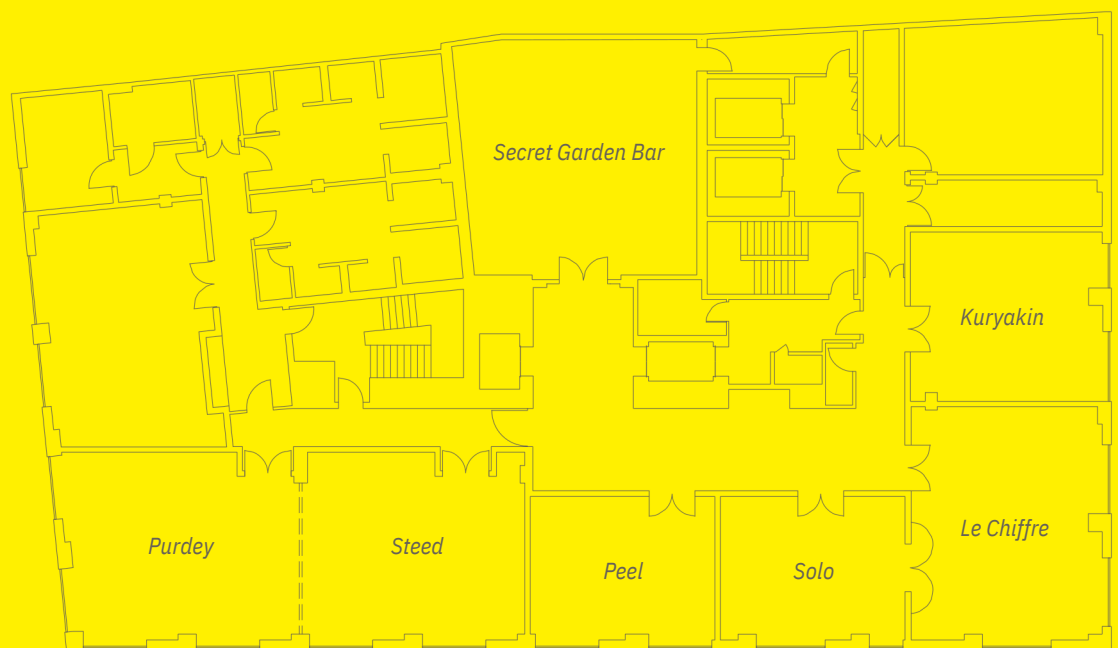


## FLOORPLANS, CAPACITIES & DIMENSIONS



Room name	Purdey & Steed	Purdey	Steed	Peel	Solo*	Kuryakin	Secret Garden	Le Chiffre*
<b>Sqm</b>	114	56	58	37	37	61	72	63
<b>L</b>	16.31m	8.03m	8.28m	6.67m	6.8m	7.1m	7.50m	2.85m
<b>W</b>	6.98m	6.98m	6.98m	5.34m	5.3m	8.68m	8.30m	3.56m
<b>H</b>	2.55m	2.55m	2.55m	2.55m	2.5m	2.55m	3.80m	2.85m
<b>Theatre</b>	100	50	50	-	-	-	-	-
<b>Boardroom</b>	40	24	24	20	16	20	-	-
<b>Cabaret</b>	50	24	24	-	-	-	-	-
<b>Dinner</b>	100	40	40	20	16	20	-	-
<b>Reception</b>	200	80	80	-	-	-	80	60
<b>Lounge Seating</b>	-	-	-	-	-	-	30	20

\* Solo & Le Chiffre can be booked together for a reception capacity of 90.

\*\* Entire first floor can be booked via exclusive hire with a maximum standing capacity of 400.